

NS221

## Ladies' linen polo shirt

Made from linen, a lightweight and breathable material.

No label: 100% customisable for your brand.

Fashionable dropped sleeves.

100 % linen. Straight fit with dropped sleeves. Side slits with swallowtail finish. Collar with collar stand and V-shaped buttonless polo shirt placket in main material. Double over stitching on cuffs and bottom hem. Half-circle in the back.

### Sizes

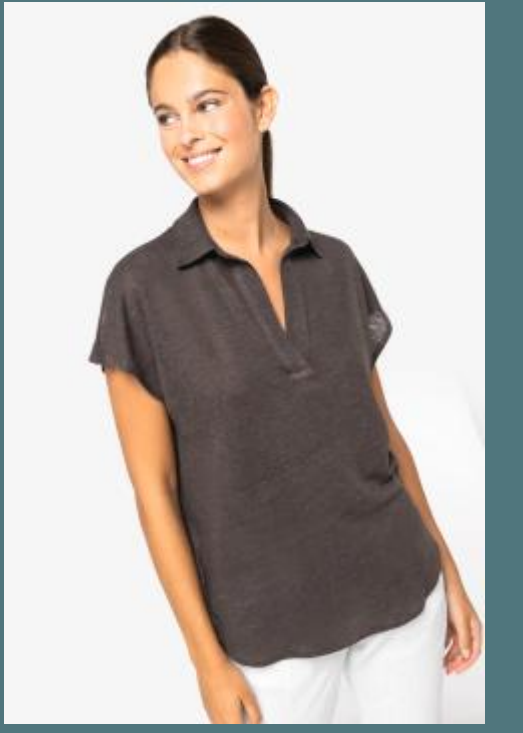
XS - S - M - L

### Grammage

190 gsm



### Certificates



All rights reserved ©

### Additional information

#### Logistic

 50 (XS / S / M / L=0)

#### Customs code

61069050

#### Country of origin

Bangladesh

### Colours



Black



Ivory



Light Olive  
Green



Navy Blue



Organic  
Khaki



Peacock  
Blue



Stone Grey



Wet Sand