

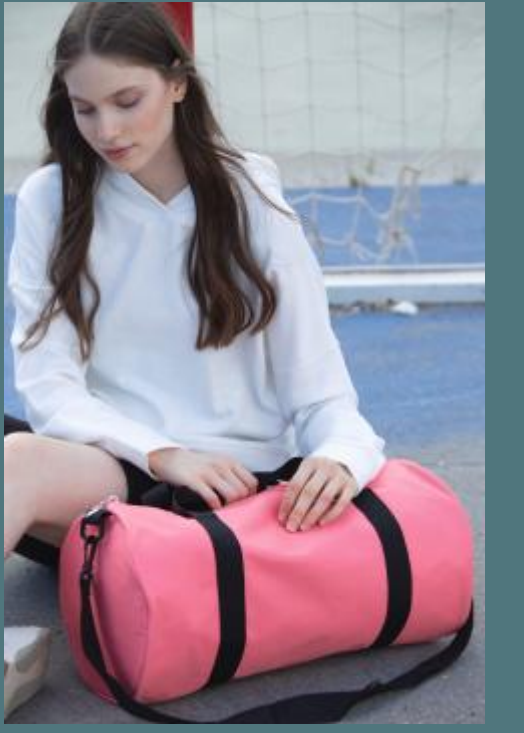
Recycled tube bag with front pocket

Duffel shape, ideal for sports.

Adjustable crossbody for greater comfort.

Sustainable bag made from recycled fibres.

100% polyester 600DPVC RPET. Duffel bag made from 50% recycled polyester. Front pocket with zip fastening. Adjustable shoulder strap.



Sizes

One Size

Grammage

345 gsm

Capacity

25 l

Dimensions

50 cm x 25 cm x 25 cm



Certificates



All rights reserved ©

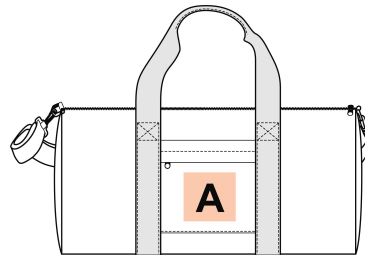
Additional information

Logistic Customs code

20 42029298

Country of origin Decoration zone

China A 10x10 cm



Colours



Black



Flamingo Pink



Matcha Green



Orange Zest



Red Safran



Taupe



Twilight Blue